



Little Lodge, commissioned for a well known Norfolk family, was designed to include key features of the main house. Constructed from a WBP plywood casing, internal plywood lining, redwood frame and a solid insulation board, the beautiful oak claddings, window frames, doors and porch make Little Lodge an extremely robust and beautiful house full of character.

Little Lodge is one of the most spacious houses commissioned with 8.5sq.m floor space and up to 1.8m head room on the upper level and 1.2m on the lower level. It has 12 volt lighting and an oil filled, covered heater. It can sleep 4 children in comfort on a sleep over, with room downstairs for a supervising adult.

Product specification

Price from £25,000.00 incl. VAT

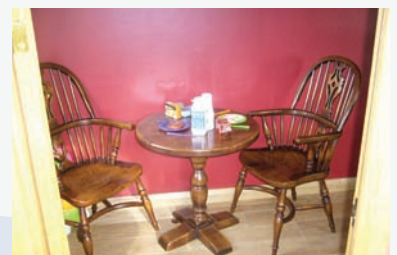
Dimensions:

Length	3600mm (11'10")
Width	2100mm (6'11")
Height	3900mm (12'10")
Weight	2500kg (5512lb)

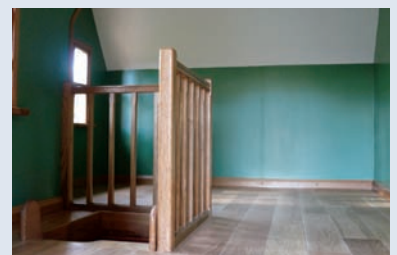
The dimensions listed are approximate. We cover all aspects of design and installation including issues such as planning permission, conservation area and listed building consents.



Solid oak porch, doors, windows and cladding



The house offers a large space for furniture and play



The playhouse can be finished in colours of your choice



Prices exclude delivery and setup

